

KTU Academics

St. Thomas College of Engineering & Technology
Sivapuram PO, Mattannur, Kannur-670702



Why KTU ?

How it differ from Other Universities ?





B.Tech Program Structure

Structured on a credit based system following the semester pattern with continuous evaluation

The duration for the B. Tech program in all branches of study, will normally be 8 semesters.

The maximum duration shall be six academic years spanning 12 semesters.

Each semester shall have 72 instructional days, followed by end semester examinations.

Credit System

The University follows Credit System and Credits are apportioned among the following knowledge segments.

Knowledge Segments

Credits



Basic Sciences	10
Mathematics	16
Humanities	9
Basic Engineering	29
Professional Engineering	89
Electives	15
Seminar	2
Comprehensive Viva	2
Design Project	2
Project	6
Total Academic Credits:	180
Student's Activities	2 [
Total credits for B.Tech. Degree	182



Academic Assessment / Evaluation

University Follows Continues Academic Evaluation Procedure

Academic Evaluation compose of Internal Evaluation and End Semester Examination



Mark Distribution

Theory Subjects

Exam	Mark
Series Test I	20
Series Test II	20
Assignments	10
Total Internal Marks	50
End Semester Exam	100
Grand Total	150

Practical Subjects

Exam	Mark
Records / Output	60
Regular Class Viva	10
Final Test / Quiz	30
Total Internal Marks	100
No University Exam	



For Theory Subjects

Students who missed either first test or second test can register for retest

Retest will be soon after the second test and cover portions of both test

Those who have missed both test are not eligible to appear for end semester examination

Medical Reason May get exception

Eligibility for Writing End Semester Examination



Minimum 75% Attendance in each subject

Minimum 45 % internal marks for each course

No pending Disciplinary action

Internal Mark % shall not Exceed
over 25% over the end semester
mark %

Otherwise grade will be FE

Student Should have minimum of 45% marks in the end Semester Examination ,

Other wise grade will be F

Award of Grades



Grades	Grade Point (GP)	% of Total Marks obtained in the course
O (Outstanding)	10	90% and above
A ⁺ (Excellent)	9	85% and above but less than 90%
A (Very Good)	8	80% and above but less than 85%
B ⁺ (Good)	7	70% and above but less than 80%
B (Above Average)	6	60% and above but less than 70%
C (Average)	5	50% and above but less than 60%
P (Pass)	4	45% and above but less than 50%
F (Fail)	0	Less than 45%
FE	0	Failed due to eligibility criteria [7-o]
I		Course Incomplete



Only For
S1, S2, S3 & S4

Summer Courses

For students who were not eligible due to attendance and internal mark shortage.

Students should have 75% attendance in the summer course and 45 % Internal mark to write the university examination.

If not they have to attend the class along with junior batch.

If a student has only one FE grade course remaining after the summer course, but otherwise eligible to move to the next semester, can register and attend this course in addition to the courses in the current semester



Supplementary Examination

Students who got an F grade in any course in the regular semester can appear for the supplementary examinations in that course.

They may also be permitted to attend the summer course, but they cannot improve their internal assessment marks.

Usually Supplementary Exam for S1 and S2 will be conducted in the Month of May / June after the summer course

There is no Provision for improvement

There is Provision for Revaluation

Eligibility for Promotion



Semester	Allotted Credits	Cumulative Credits	Minimum cumulative credits required to register for courses in higher semesters
First	24	24	Not insisted
Second	23	47	35
Third	24	71	Not insisted
Fourth	23	94	80
Fifth	23	117	Not insisted
Sixth	23	140	126
Seventh	22	162	Not insisted
Eighth	18	180	



Options for 5th and Higher Semesters

Summer courses are not offered in higher semesters

Failed students who have less than 45% marks in internal assessments have to register again for the course in the regular semester

Failed students having 45% marks or more in internal assessments can register for the end semester examination without attending the course again



Design Project

Two Project Progress Evaluation carrying 20 Marks

Final Report Evaluation Carrying 60 Marks

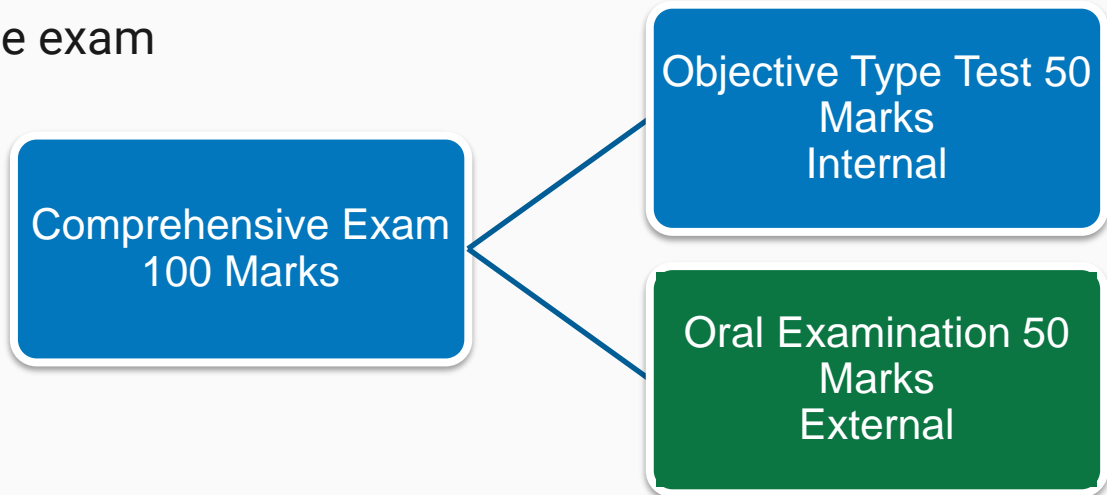




Comprehensive Examination

Will be conducted during 6th Semester

Only Students who passed the exam
can appear for placements



Seminar



20 Minute Duration

Marks for report 30 %

Presentation 40 %

Ability to answer questions on topic 30%





Final Semester Project

Two Progress Assessment : 20 % by faculty Supervisor

Final Project Report : 30 % Assessment board

Project Presentation and Viva: 60 % Assessment Board

If the student fails in the project a fresh registration for the project for one semester is mandatory





The Academic Calendar

Class Starts on 25/07/2016 & Ends On 24/11/2016

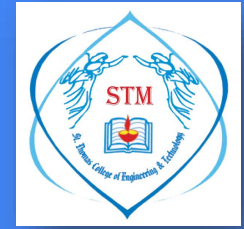
Total 84 Working Days :

6 Days For The Conduct of Internal Exams

6 Days For The Conduct of Model Exam

11 Days For the Conduct of Revision , 6 Day Study Leave

End Semester Exam starts 02/12/2016



The Academic Calendar

First Series Test

Aug-16		
26	25	Series Test
27		
28		
29	26	Series Test
30	27	Series Test

Second Series Test

Oct-16		
7	51	Series Test
8		
9		
10		Maha Navami
11		Vijayadasmi
12		Muharam
13	52	Series Test
14	53	Series Test



The Academic Calendar

Model Exam

Nov-16		
5	69	Model Exam 1
6		
7	70	Model Exam 2
8	71	Model Exam 3
9	72	Model Exam 4
10	73	Model Exam 5 Publish Lab Exam Marks
11	74	Model Exam 6

Revision

14	75	Revision
15	76	Revision
16	77	Revision
17	78	Revision
18	79	Revision
19	80	Revision
20		
21	81	Course Committee (KTU) Revision
22	82	Revision
23	83	Revision
24	84	Class Ends (KTU)



Student Activity Points

All students have to earn a minimum of 100 activity points from various activity segments listed to qualify for the B.Tech degree.

Two credits are given for this on a pass/ fail basis and is mandatory for getting the B.Tech Degree.

For lateral entry students joining from the third semester, the activity point requirement is 75.



Activity Point Distribution

Activity	Max Points
NSS	60
Sports	60
Games	60
Arts	60
MOOC	50

Activity	Max Points
Industrial Training	20
Industrial Visit	10
Foreign Language	50
Arts	60
Start-up- company	60

Details are available College website: www.stthomaskannur.ac.in



Extra Curricular Activities

NSS

UNAI

NPTEL

Spoken Tutorials



Student Handbook



Rules and Regulations of the college

Academic Calendar

Timetable

Anti ragging cell phone number

Other Contact Numbers



Campus Management System

All the academic activities in the college are done with the help of CMS

Students / Parents can

View attendance, Internal Marks, University Marks, Study Materials

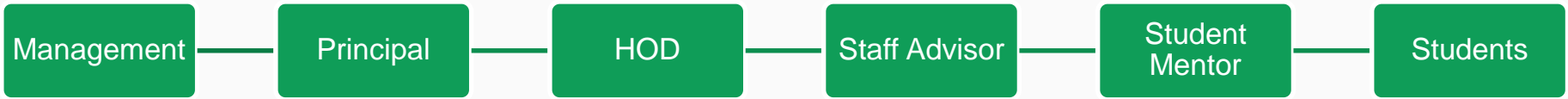
Login Credentials will be given by the end of this week.

SMS to parents and students. (STMKNR, STMEXM)

Website: www.stthomaskannur.ac.in



Administrative Structure





College Timing

Reach the College by
08:40

Tea break from 10:30 to
10:40

Friday Lunch break from
12.20 to 02:00



Thank You !

Visit www.stthomaskannur.ac.in for more detail

